

CREW BOAT "Al Melahia 202" PARTICULARS



PRINCIPLE PARTICULARS

Type of ship	DAMEN Fast Crew Supplier 2008
Owner	The Maritime Company for Navigation
Port of registry	Jazan
Flag	Saudi Arabia
Classification society	Lloyd's Register of Shipping
IMO number	9841134
Year built	2017

CONSTRUCTION DETAILS

Material	Aluminium both hull and superstructure
Length overall	19.70 m
Max breadth	8.2 m
Free deck area	50 sqm
Depth moulded	4.5 m
Summer Loaded Draft	1.70 m
GRT	39 T
NRT	42 T
Dead weight	16 T (incl. fuel, persons, cargo etc.)

Tank Capacities

Fuel oil	8.00 m3	can be increased to 13 m3
Fresh water	1.14 m3	
Wastewater	1.20 m3	
Dirty oil	1.20 m3	

PERFORMANCE

Top Speed	25 Knots
Eco speed	19 knots
Range	700 Nautical miles

DECK CARGO

Free deck space	50m2
Max deck load	1.5 ton/m2
Fore ward deck area	10 ft container
Aft deck area	10 ft container

RADIO & NAVIGATION EQUIPMENT

Gyro compass, Magnetic Echo sounder, VHF, Radar, GPS, Navtex, AIS, Electronic chart

SEATING

30 passengers inside and up to 30 persons outside seated

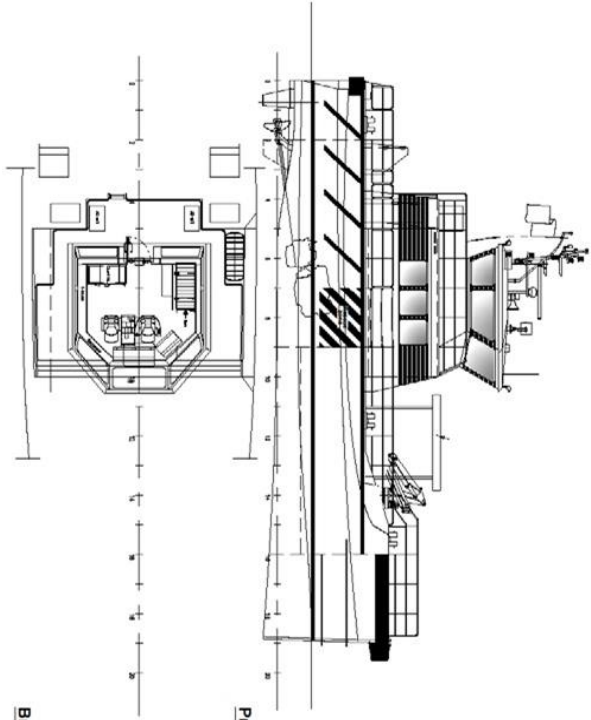
MACHINERY

Propulsion	two fixed pitch propellers
Main engines	2x MTU, type 8V2000 M72
Output	1930 hp total at 2250 rpm
Gearboxes	2x Reintjes ZWVS 440/1 (two speed)
Generators	2x Caterpillar, type C2.2T
Output	22,5 kW / 28,1 kVA, 3 phase, 230 V / 400V, 50 Hz

DECK MACHINERY

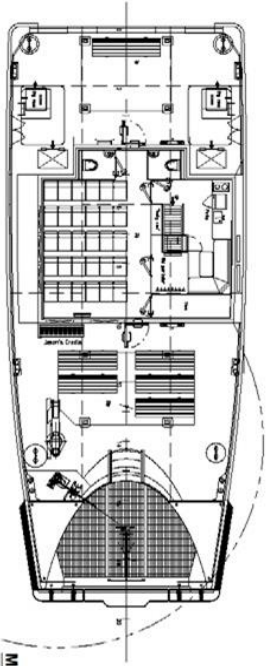
Deck equipment	Rubber "D" fender heavy duty bow fender container lashing points
Knuckle boom crane	Heila 5-2S, about 750 kg at 6.90 mtrs
Jacobs ladder	Starboard side

CREW BOAT Al Melahia 2012

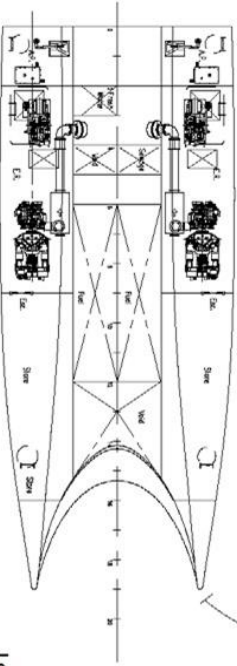


Profile

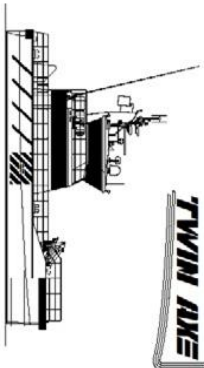
Bridge deck



Main deck



Lower deck



Damen
Fast Crew Supplier® 2008

Main dimensions
Length overall 19.70 m
Beam overall 8.20 m
Depth at sides 2.95 m
Draught (approx.) 2.00 m

Project	A1	Contract No.	FCS 2008/199/12
Scale	1:75	Rev.	01
Drawn	JIN	Checked	JIN
Approved	JIN	Contract No.	FCS 2008/199/12
Project	A1	Contract No.	FCS 2008/199/12
Scale	1:75	Rev.	01
Drawn	JIN	Checked	JIN
Approved	JIN	Contract No.	FCS 2008/199/12

General Arrangement

Copyright © 2008 by Damen Shipyards Group