

GENERAL

Type of ship	HSC RO/RO PAX
Owner	MINISTRY OF TRANSPORT
Port of registry	JAZAN
Flag	Saudi Arabia
Classification society	Lloyd's Register of Shipping
Call sign	7Z0019
IMO number	9441829
Official number	SAJ/108
Builder's identification	HULL 342
Year built	2008
Max Complement	668 PERSON
Speed	30.0 Knots@ 90% MCR WITH OPERATION

CONSTRUCTION DETAILS

Length overall	68.6 m
Beam (m)	17.65 m
Depth moulded	5.25 m
Loaded Draft (Molded)	3.20 m
GRT	2438 T
NRT	731 T
Dead weight	258 T
Fresh water	20000 LTR
Bunker capacity	47500 LTR
Bow and Stern ramp length	6.358 M
Bow and Stern ramp fingers	1.20 M
Bow and Stern ramp door loading capacity	7 T (2.4 MIN AXEL SPACING)
Permissible uniform loading	7 T

MACHINERY & DECK MACHINERY

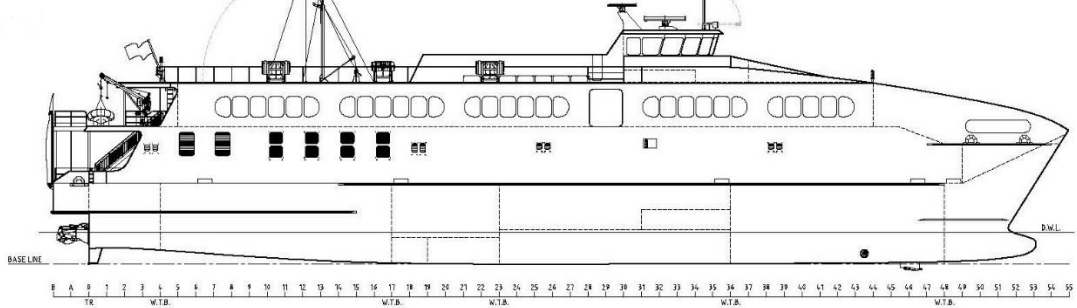
Main propulsion system	4X 2880 Kw MTU16V 4000 M73L @ 2050 RPM
Gen - Sets	4X 228 KW MAN
Main Propulsion	4 X KAMAWA 80S3
Bow thruster	2 X SINAMICS G150
Mooring winch	4 CAPSTAN
Rescue boat	2X Rescue boat 6 person
Life raft	6 X 128 PER + 1 x 65 PER
Ramp Door	7.55 Length, 7 T Capacity

CARGO DETAILS

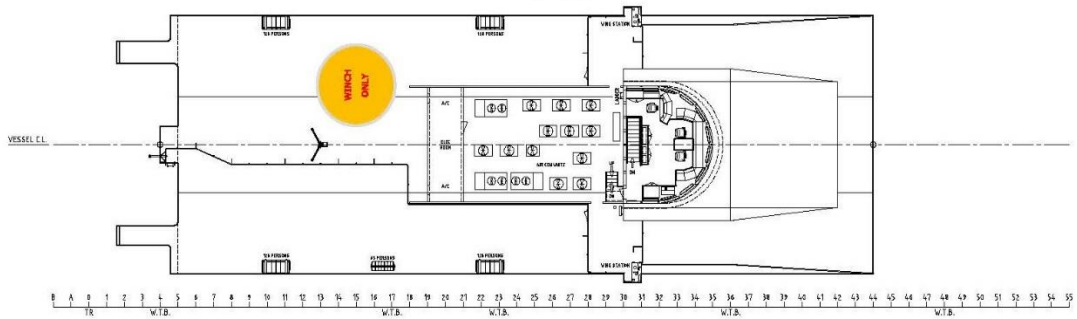
Car Deck Capacity :	334 l/M
MAX. Garage hight :	3.10 M

RADIO & NAVIGATION EQUIPMENT

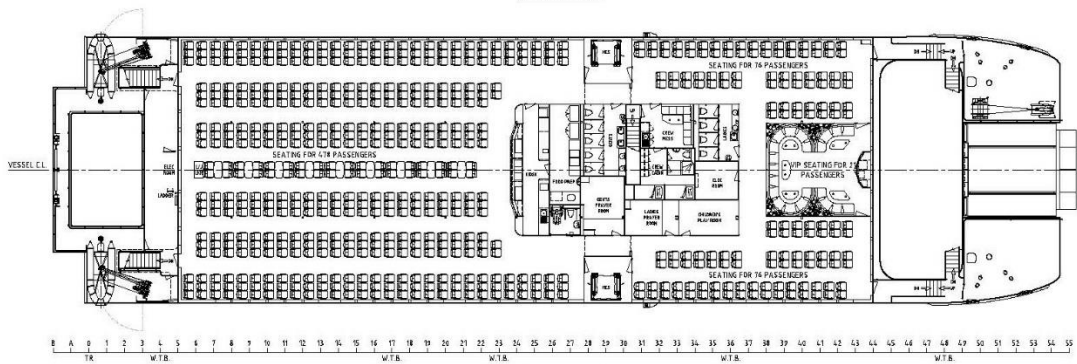
Auto pilot	SPERRY MARINE 0735-08
GPS	2 (Furuno GP-170)
AIS	JOTRON
Fire alarm system	CONSILIUM
Radar	2(Furuno FAR-MU231)
Telephone system	IMCOS 1142/AL
Rudder indicator	4 X KAMEWA JET INDECATOR
Compass	SPERRY MARINE
Gyro compass	SPERRY MARINE
Echo sounder	KODEN
Speed & distance log	WALKER
Communication equipment	2 VHF, 1 MF/HF, 2 EPIRB, 2X SART, 3 X VHF 2-way radio



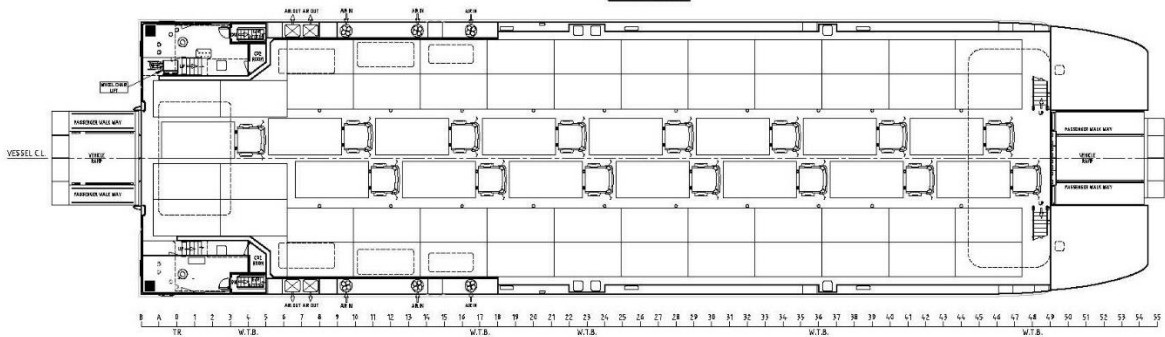
PROFILE



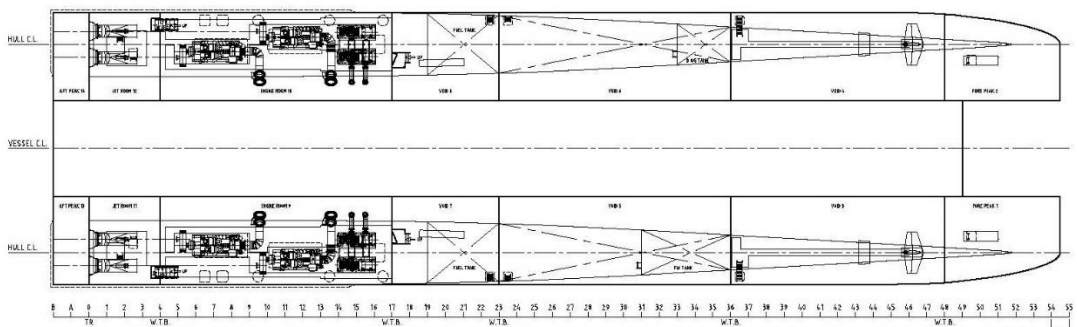
BRIDGE DECK



UPPER DECK



MAIN DECK



HULLS