



GENERAL

Type of ship	High Speed Passenger Ferry
Owner	The Maritime Company For Marine Transportation MCMTT
Port of registry & Flag	Jeddah - Saudi Arabia
Classification society	Bureau Veritas
Call sign	HZ1171
IMO number	9819519
Official number	241101
Builder's identification	AL / 012
Year built	2017
Passenger / Crew	317 / 8
Speed	20 Knots
Gross Tonnage	390 T

MAIN ENGINES & GENERATORS

Main propulsion system	2 X 1440 kW MTU 16V2000 M72 & 2 X ZF5000 GEARBOX
Gen - Sets	2 X 99 kW PERKINS 6TWGM 50Hz - 380 V
Emergency Generator	1 X 47 kW PERKINS 4.4 GM 50Hz - 380 V
Main Propulsion	2 X FPP

RADIO & BRIDGE NAVIGATION EQUIPMENT

Auto pilot	FURUNO AP70
GPS	FURUNO GP-170
ECDIS	FURUNO FMD 3100
AIS	FURUNO FA-170
NAVTEX	FURUNO NX-700
BNWAS	FURUNO BR-510
VDR	FURUNO VR-7017
Wind speed & direction indicator	WALKER P1249
Fire alarm system	EPAS ALPHA 4/8/12
Radar	FURUNO MU-190
Public address & Intercom	JOTRON PHONTECH 1601 & 3101
Magneto phone	JOTRON PHONETECH 4061
Compass	JHON LILLEY & GILLIE SR4
Gyro compass	SIMRAD GC80
Echo sounder	FURUNO FE-800
Speed & distance log	FURUNO DS-80
Communication & GMDSS equipment	1 X VHF FURUNO FM-8900 S 1 X VHF SAMYUNG MARINE 6000 A 1 X EPIRB JOTRON 2 X JOTRON TRON SART20 3 X VHF 2-way radio

DIMENSIONS

Length Overall	39 m
Beam	10 m
Draft	2 m

DECK EQUIPMENT

ANCHOR	1 X 150 KG
ANCHOR WIRE LENGTH	153.0 Meters

SAFETY & FIRE FIGHTING EQUIPMENT

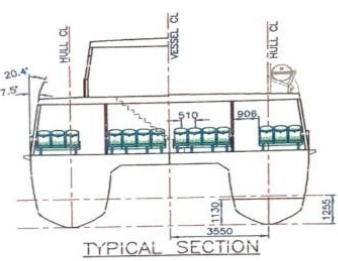
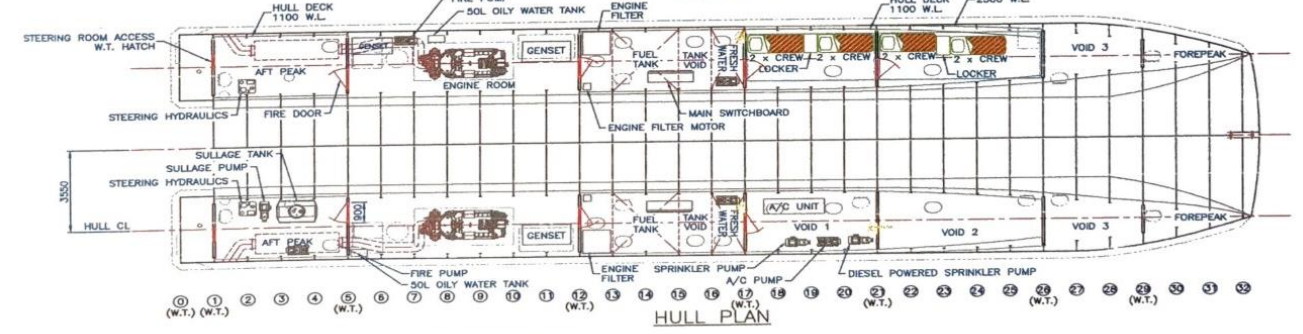
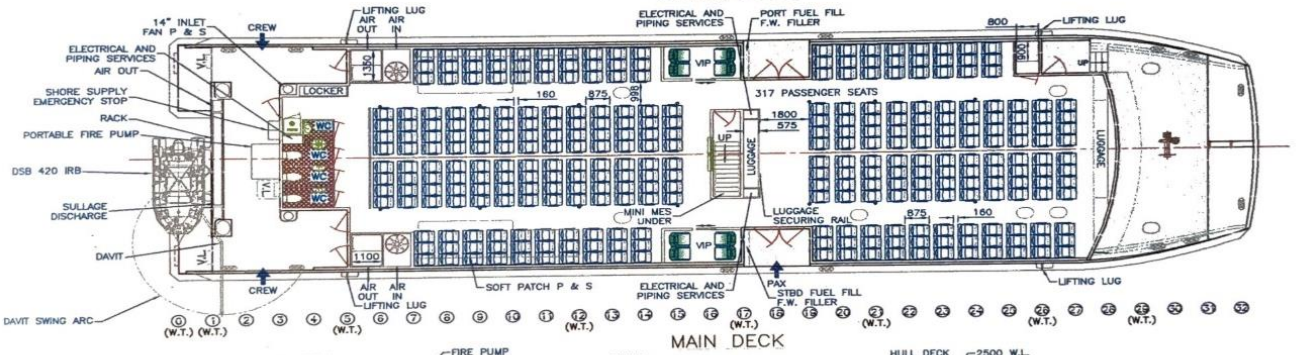
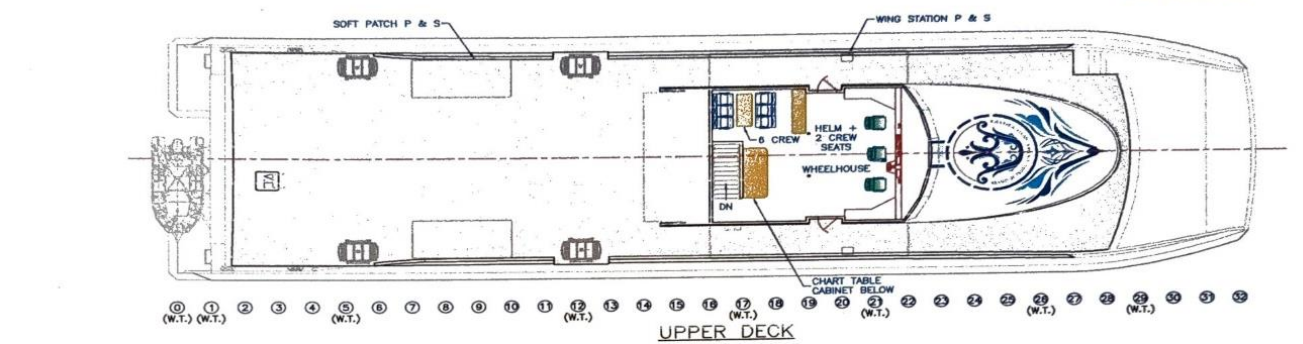
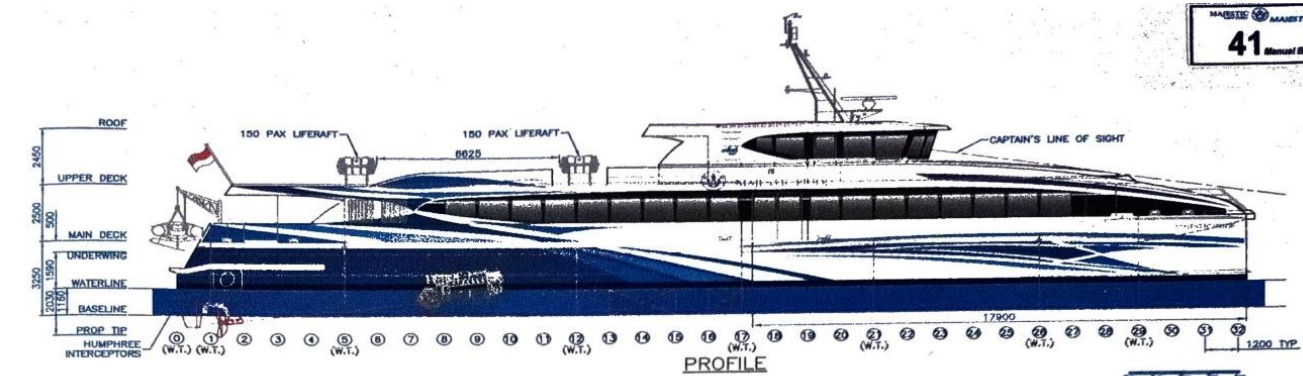
Life Rafts & Slides	2 X 100 PAX
SOLAS TYPE A HSC	2 X 150 PAX
Rescue Boat	INFLATABLE TYPE FOR 6 PERSONS
Jason Cradle	1 PCS
Life Buoy	3 X WITH LINE 4 X WITH LIGHT & LINE 2 X M.O.B
Hand Flares	12 PCS
Rocket Parachutes	12 PCS
Buoyant Smoke Signals	4 PCS
Line Throwing App.	4 PCS
Fire Extinguishers	9 X POWDER 6 KG 4 X CO2 5 KG
Fire Fighting Men Suite	2 X PCS + 2 X SCBA
Sprinkler System	1 X STBD ELECTRIC 95 M3 / hr SP 29 M Head 15 Kw @ 2950 RPM 1 X STBD DIESEL 95 M3 / hr SP - 29 M Head 14.7 Kw @ 3000 RPM
Fire Pump	1 X P.S 35 M3 /hr - 30 M 7.5 Kw 2950 RPM 1 X STBD / GP 35 M3 /hr - 30 M 7.5 Kw @ 2950 RPM
Aerosol system	8 UNITS FIRE PRO FP 5700 FOR ENGINE ROOM

TANK CAPACITY

Fresh water	5000 Ltrs
Bunker capacity	10000 Ltrs
Sewage capacity	1000 Ltrs

HSC MONA ALMELAHIA

MASSIS MAUSIT PIRI
41
Manual Book



SPECIFICATIONS

OVERALL LENGTH:	39.0m
WATERLINE LENGTH:	38.7m
BEAM: (excl SPONSONS)	10.0m
PASSENGERS:	317
CREW:	18
CONSTRUCTION:	ALUMINIUM
FUEL OIL:	2 x 5000 L
FRESH WATER:	2 x 2000 L
SULLAGE:	1 x 1000 L
MAIN ENGINES:	2 x MTU 16V2000 M72
RATED POWER:	2 x 1930hp @ 2250rpm
GEARBOX:	2 x FP ZF5000
PROPELLSION:	2 x PP PROPELLERS
GENSETS:	2 x CAT C4.4 ACERT 89kW 50Hz

PT. CAHAYA SAMUDERA SHIPYARD
Jln. Merdeka Sekupang - Batam Indonesia
Telp. 0778-327806/808. Fax. 0778-327807
Email : info@cssbatam.com

SHIP NO. HULL TBD

NO.	REVISION	DRAWN	DATE
L	DAVIT & RESCUE BOAT ADDED	B.M.W.	06.04.17
K	W.C.'s UPDATED	M.L.	11.01.17
J	ADDITIONAL SPRINKLER PUMP ADDED	M.L.	03.01.17
I	SWITCHBOARD, A/C EQUIPMENT LOC. REVISED	D.F.	14.11.16
H	MAST REVISED	D.F.	28.09.16
G	MOVED MD PILLARS & IB SEATS 25mm INBOARD	M.A.C.	09.08.16
F	UPDATED IAW YARD COMMENTS	M.A.C.	6.06.16
E	WINDOW HEIGHT & SOFT PATCH LENGTHENED	M.A.C.	18.05.16
D	VIP ROOMS ADDED, FWD HULL ACCESS UPDATED	M.A.C.	11.05.16
C	REVISED IAW YARD COMMENTS, ENGINE CHANGED	M.A.C.	5.05.16
B	UPDATE IAW CONST. DWG & LIFTING LUGS MOVED	M.A.C.	01.04.16
A	ENGINE ROOM ACCESS HATCH INCREASED	M.L.	28.01.16



DESCRIPTION			
39m CATAMARAN PASSENGER FERRY			
GENERAL ARRANGEMENT			
DESIGN No.	IC15138	SHEET No.	D-011
DRAWN	S.D.M.	DATE	10.08.15
CHECKED	A.T.	SCALE	1 : 100 (U.N.O.)
DIMENSIONS IN MILLIMETRES UNLESS NOTED			