



GENERAL

Type of ship	Landing Craft
Owner	MACNA
Port of registry	Jazan
Flag	Saudi Arabia
Classification society	Lloyd's Register of Shipping
Call sign	HZ0180
IMO number	9661352
Official number	SA/110
Builder's identification	PPS 526
Year built	2013
Max Complement	12 people
Speed	10 Knots

CONSTRUCTION DETAILS

Length overall	81.0 m
Beam (m)	17.4 m
Deck area	950 sqm incl. SPS area
Depth moulded	4.50 m
Loaded Draft (Molded)	3.012 m
GRT	1687 T
NRT	507 T
Dead weight	1929.44 T
Fresh water	50.9 T
Bunker capacity	270 m ³
Bow ramp length	6.85 X 7.80 M
Bow ramp fingers	6.95m B x2m L
Bow ramp door loading capacity	SWL 60 T
Permissible uniform loading	SWL 13 T / M2

MACHINERY & DECK MACHINERY

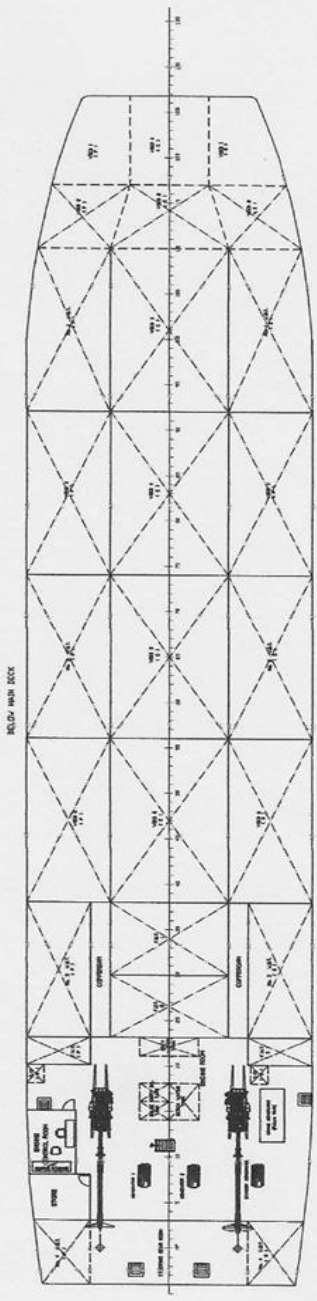
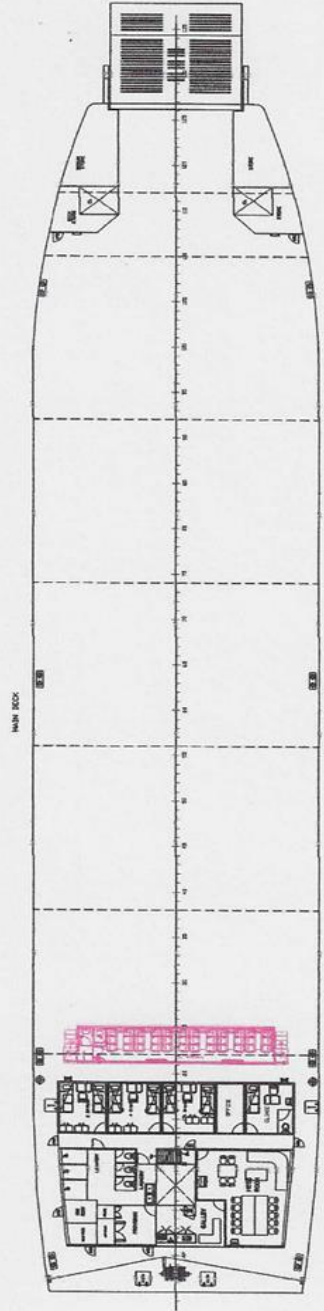
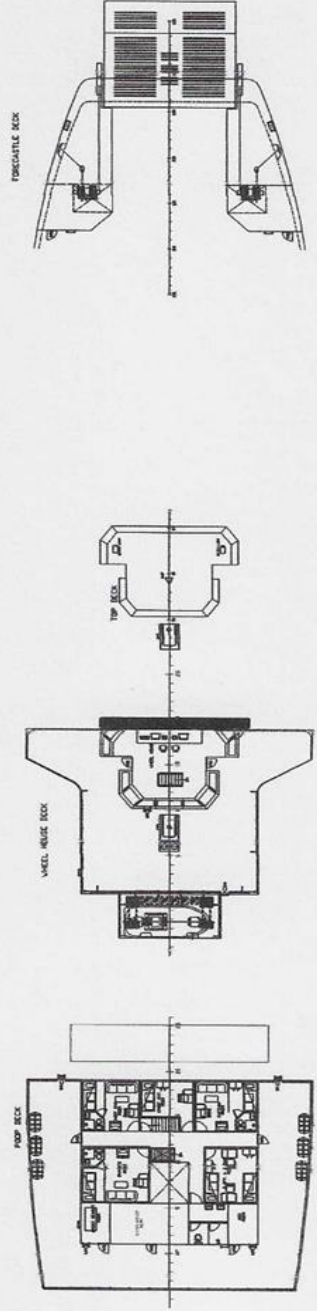
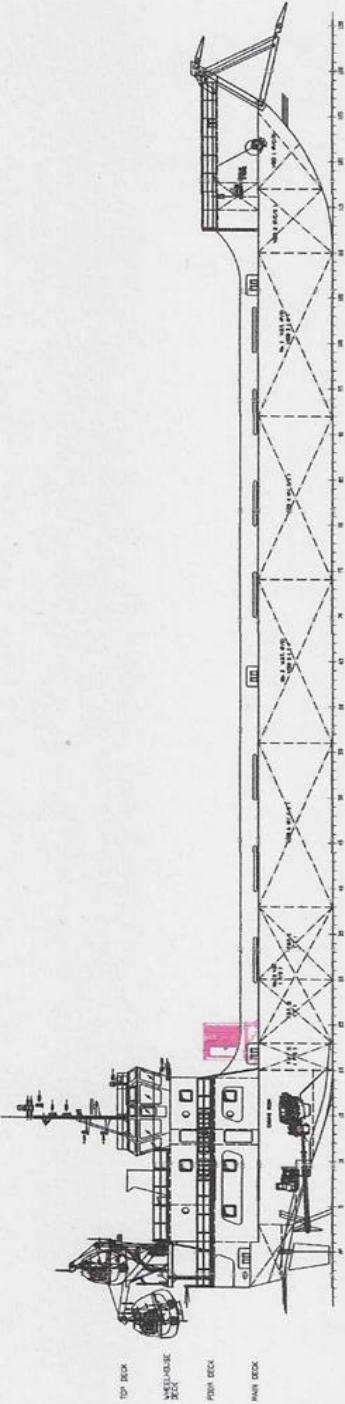
Main propulsion system	2 X 1000 HP @ 1800 rpm Caterpillar C32 Acert
Gen - Sets	3 Generators X (69.4 KW) Caterpillar C4.4 DTA 111 HP 50 HZ
Emergency Generator	1 x 56.4 KW C4.4 Caterpillar
Main Propulsion	Fixed Propeller
Bow thruster Schottel pump jets	N/A
Mooring winch FWD & AFT	(AFT) PHMW5S (FWD) PHRAW 36S-PT ST
Rescue boat	1 X Rescue boat 6 person
Life raft	4 X 20 person + 2 x 25 person Total (6) life rafts
Ramp Door	6.85 Mtrs Length X 7.80 Breadth flap included , 60T SWL

CARGO DETAILS

Cargo freshwater	N/A
Cargo freshwater discharge rate	N/A
Cargo fuel oil	N/A
Cargo fuel discharge rate	N/A
Deck strength	13 T/m ²

RADIO & NAVIGATION EQUIPMENT

Auto pilot	ANSCHUTZ PILOTSTAR D
GPS	Furuno GP-150 (2 Set)
AIS	Furuno NX-700A
Fire alarm system	Consilium Salwico
Radar	Furuno 2 sets Radars
Telephone system	Magnetic telephone VINGTOR VSP-211-L
Rudder indicator	PALMARINE 1-8805 MVF-110L 45C3-V
Compass	REFLECTA/3 Cassens & Plath GmbH
Gyro compass	ANSCHUTZ STD 22 DigitalGyro
Echo sounder	Furuno FE-700
Speed & distance log	Furuno DS-80
Communication equipment	GMDSS radio, EPIRB, 2X SART, 3 X VHF 2-way radio





KSP ENGINEERING & DESIGN

 10/10, Jalan Sultan Ismail,

 50450 Kuala Lumpur, Malaysia

 Tel: 603-2619-6666 Fax: 603-2619-6667

 Email: info@ksp-engineering.com

 www.ksp-engineering.com

PRINCIPAL PARTICULARS	
LENGTH OVER ALL	81.00 M
BREADTH (MIDLINED)	17.40 M
DEPTH (MIDLINED)	4.50 M
DRAFT (DESIGN)	3.00 M
FR. SPACING	600 MM

NOTE: NEW AREAS SHOWN IN COLOUR



CONSTANTINE A. PERDIKARIS
 ENGINEERING INC. TECHNICAL SERVICES
 NAVAL ARCHITECTS - MECHANICAL ENGINEERS
 MARINE SURVEYORS AND CONSULTANTS
 TEL: (3-57) 31-452887, 21-2413711 FAX: 21-69431137; e-MAIL: APC@KSP-DESIGN.COM

TITLE M/V LEEN AL MELAHIA & DANA AL MELAHIA GENERAL ARRANGEMENT PLAN		PROJECT No. 469 - 03 - 001	
DRAWING No. A - 01		SHEET No.	
DATE: JUNE 2019	REVISIONS: 02	DATE: 01. JUNE 2017	DATE: 03. JANUARY 2016
DRAWN: FAYE/MSM	BY: APC	BY: APC	BY: APC
CHECKED: CAP/MSM	BY: APC	BY: APC	BY: APC

THIS DRAWING IS PROPERTY OF "CONSTANTINE A. PERDIKARIS" ENGINEERING AND TECHNICAL SERVICES OFFICE. IT SHALL BE COPIED, REPRODUCED OR USED IN ANY MANNER WITHOUT THE WRITTEN PERMISSION OF THE PROPRIETOR.