



GENERAL

Type of ship	Landing Craft (LTC)
Owner	MACNA
Port of registry	JAZAN
Flag	Saudi Arabia
Classification society	Lloyd's Register of Shipping
Call sign	7Z0179
IMO number	9661340
Official number	SAJ/111
Builder's identification	PT.PALMA SHIPYARD-BATAM-2012
Year built	2013
Max Complement	12 people
Speed	10 Knots

CONSTRUCTION DETAILS

Length overall	81.0 m
Beam (m)	17.4 m
Deck area	950 sqm incl. SPS area
Depth moulded	4.50 m
Loaded Draft (Molded)	3.012 m
GRT	1271 T
NRT	382 T
Dead weight	2929.44T
Fresh water	51.94 m ³
Bunker capacity	290.77 m ³
Bow ramp length	6.85 X 7.80 M
Bow ramp fingers	6.95m B x2m L
Bow ramp door loading capacity	SWL 60 T
Permissible uniform loading	SWL 13 T / M2

MACHINERY & DECK MACHINERY

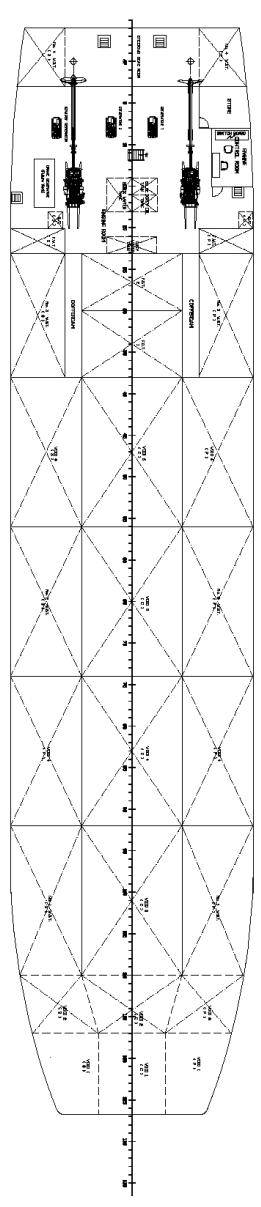
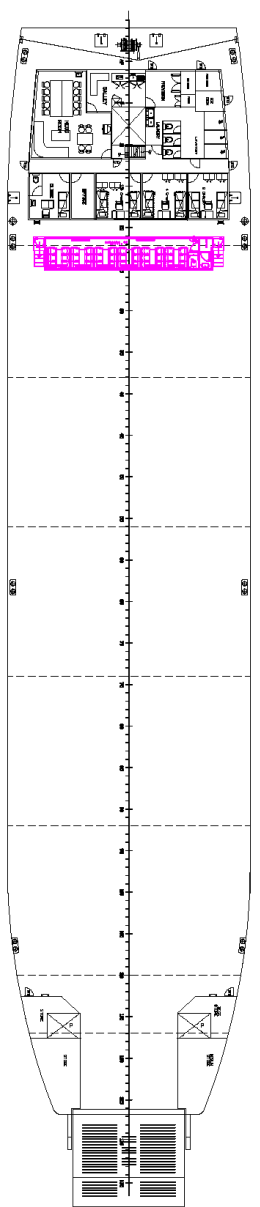
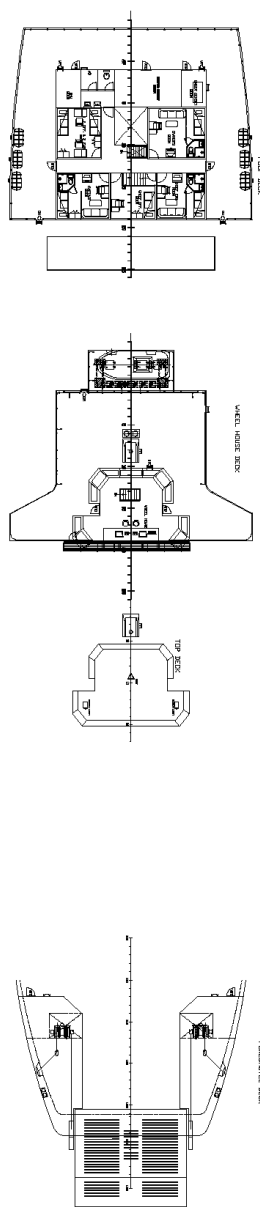
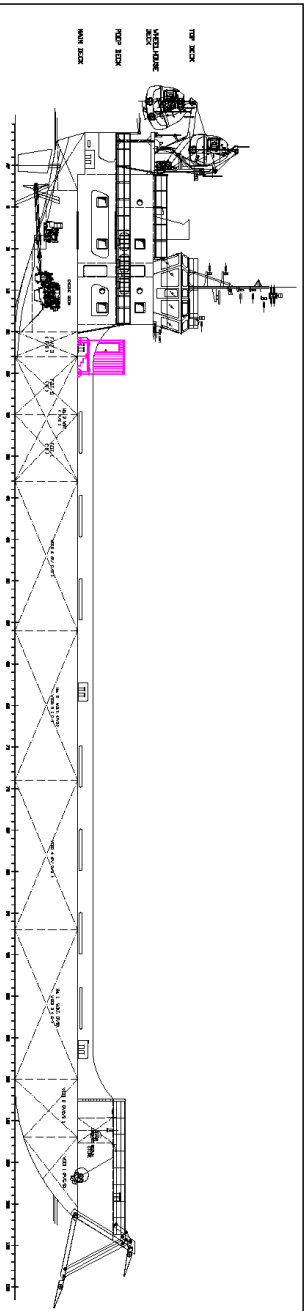
Main propulsion system	2X1000 BHP @ 1800 RPM ,CATERPILAR C32 ACERT , REDUCTION GEAR:WAF 464 REINTJES 5.04:1(PS/SS) FIXED PROPELLAR	
Gen - Sets	3 X 69 KW , CAT. - C4.4	
Emergency Generator	56.4KW ,C4.4 DIT	
Main Propulsion	2X1000 BHP @ 1800 RPM ,CATERPILAR C32 ACERT , REDUCTION GEAR:WAF 464 REINTJES 5.04:1(PS/SS) FIXED PROPELLAR	
Bow thruster Schottel pump jets	N/A	
Mooring winch FWD & AFT	PALMARINE MODEL PHW5S , CAPACITY: 5T-12 M/MIN. HYDRAULIC MOORING WINCH	
Rescue boat	1 X Rescue boat 6 person	
Life raft	4 X 20 person + 2 x 25 person Total (6) life rafts	
Ramp Door	6.85 Mtrs Length X 7.80 Breadth flap included , 60T SWL	

CARGO DETAILS

Cargo freshwater	N/A
Cargo freshwater discharge rate	N/A
Cargo fuel oil	N/A
Cargo fuel discharge rate	N/A
Deck strength	13 T/m ²

RADIO & NAVIGATION EQUIPMENT

Auto pilot	ANSCHUTZ PILOTSTAR D
GPS	Furuno GP-150 (2 Set)
AIS	Furuno NX-700A
Fire alarm system	Consilium Salwico
Radar	Furuno 2 sets Radars
Telephone system	Magnetic telephone VINGTOR VSP-211-L
Rudder indicator	PALMARINE 1-8805 MVF-110L 45C3-V
Compass	REFLECTA/3 Cassens & Plath Gmbh
Gyro compass	ANSCHUTZ STD 22 DigitalGyro
Echo sounder	Furuno FE-700
Speed & distance log	Furuno DS-80
Communication equipment	GMDSS radio, EPIRB, 2X SART, 3 X VHF 2-way radio



PRINCIPAL PARTICULARS	
LENGTH OVER ALL	81.00 M
BREADTH OVERLIEDED	17.40 M
DEPTH OVERLIEDED	4.50 M
DECK DESIGN	3.00 M
FR. SPACING	6.00 mm

NOTE: NEW AREAS SHOWN IN COLOUR

SUPPORTING DOCUMENT
 WITH THE PERMISSION OF
 THE REGISTERED ENGINEER (R.E.)
 REGISTERED UNDER THE REGISTERED ENGINEERS (R.E.) ACT
 No. 11, December 2018
 Date: 11 December 2018
 Scale: A4
 Author: M
 Checked: M
 Drawn: M
 Project: New Ship Design Support Office
 Project: Support Office
 Project: Support Office

CONSTANTINE A. PERDIKARIS
 ENGINEERING AND TECHNICAL SERVICES

MARINE ARCHITECTS, MECHANICAL ENGINEERS
 ELECTRICAL ENGINEERS AND MARINE SURVEILLANTS

N/V LEEB ALMEJARA & DAMA ALMEJARA
 GENERAL ARRANGEMENT PLAN

(SEE DRAWING NO. 03 FOR PROVISIONS)

TITLE: GENERAL ARRANGEMENT PLAN DATE: 11.12.2018 SCALE: 1:150 DRAWING: TECHNICAL DESIGN: CONSTRUCTION NO. REVISIONS: 02 NO. APPROVED: 02 NO. REVISIONS FOR: 02	SHEET No.: REVISIONS: 02 NO. APPROVED: 02 NO. REVISIONS FOR: 02 DATE: 11.12.2018 DRAWING: TECHNICAL DESIGN: CONSTRUCTION
--	--

THIS DRAWING IS PROPERTY OF "CONSTANTINE A. PERDIKARIS ENGINEERING AND TECHNICAL SERVICES OFFICE" AND CANNOT BE COPIED, REPRODUCED OR HANDS OVER TO THIRD PARTY WITHOUT THE PROMOTION WRITER APPROVAL.