



GENERAL

Type of ship	Landing Craft
Owner	MACNA
Port of registry	JAZAN PORT
Flag	Saudi Arabia
Classification society	Lloyd's Register of Shipping
IMO number	9578335
Year built	2010
Min Complement	6 People
Max Complement	12 People
Speed	10 Knots
Fuel consumption	5000 Lt/Day

CONSTRUCTION DETAILS

Length overall	54.50 m
Beam (m)	18.0 m
Deck area	650 sqm
Depth moulded	4.5 m
Summer Loaded Draft	3.00 m (Molded)
GRT	1273T
NRT	414T
Dead weight	1500T
Fresh water	156.06m ³
Bunker capacity	73.36m ³

MACHINERY & DECK MACHINERY

Main propulsion system	2X477kW 6 cylinder, Cummins KTA19 diesel
Auxiliary Gen	3X6BT5.9 Cummins 80kW
Deck Gen/Harbor	John Deere 200kW
Winches & Cranes	1 X RB Davit/Crane, 1 X Winch
Rescue boat	1 X Rescue boat 6 person
Ramp Door	12m Length, 300T Capacity

CARGO DETAILS

Cargo freshwater	915.08m ³
Cargo freshwater discharge rate	40m ³ /H@35M
Cargo fuel oil	589.41m ³
Cargo fuel discharge rate	40m ³ /H@25M
Clear deck area	625m ²
Main deck rating	7.5T/m ²
Container capacity	70 TEU
Stack weight (max)	45T
Deck strength	15 T/m ²

RADIO & NAVIGATION EQUIPMENT

INMARSAT-C	Furuno Felcom 15
GPS	Fitted
AIS	Furuno FA-150
VHF/FM radio telephone	Furuno FM-8800
9GHz radar	2 X ACR PATHF
EPIRB	McMurdo E5
Gyro compass	Raytheon EC
Magnetic compass	Saura EC/13945
LRIT	Furuno EC

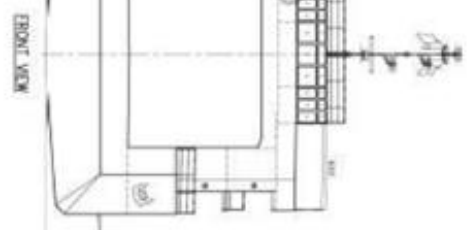
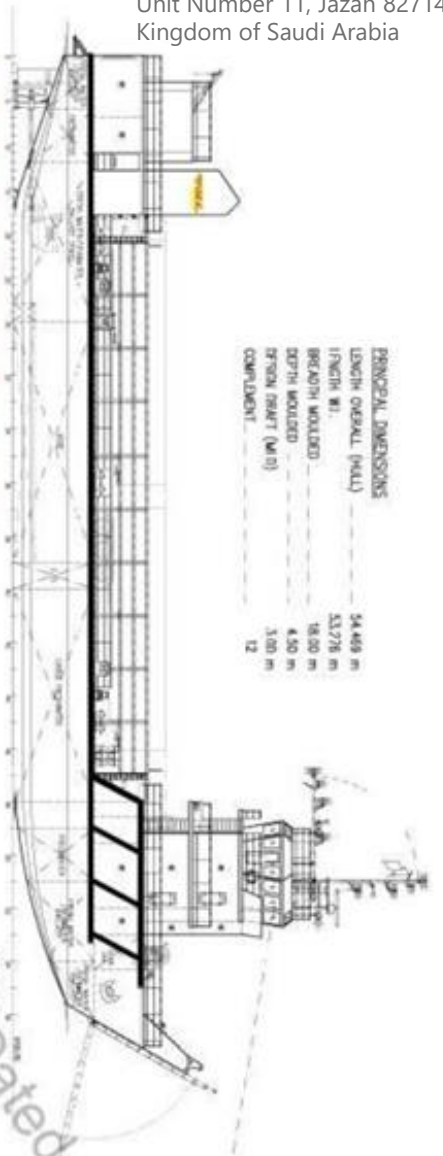


الملاحية MACNA

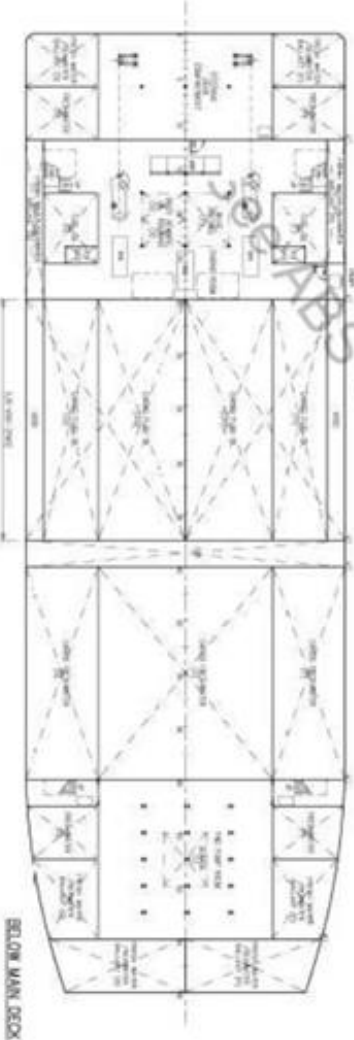
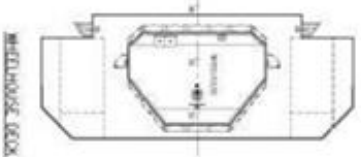
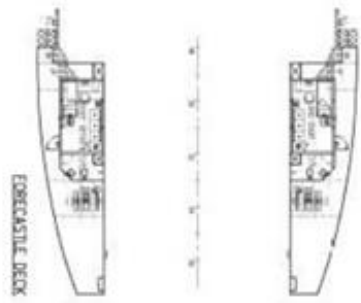
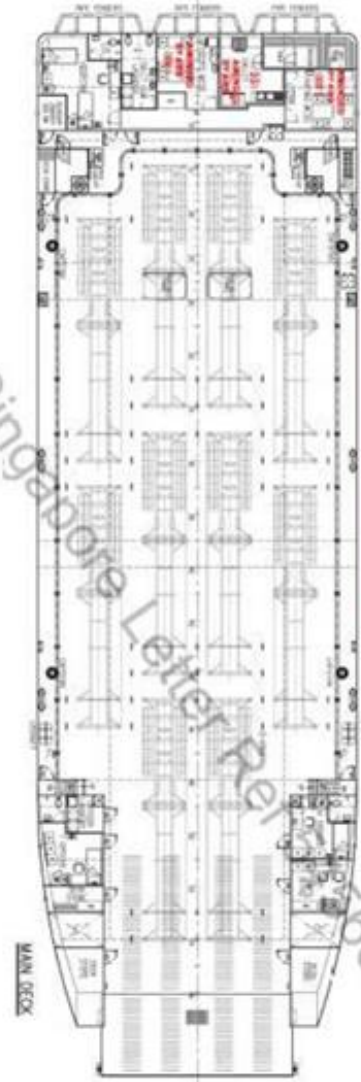
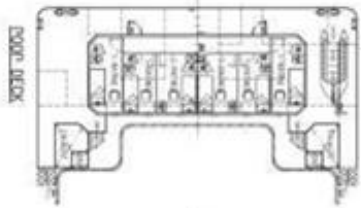
7797 King Fahd – Al Qalah Dist.
Unit Number 11, Jazan 82714
Kingdom of Saudi Arabia

PRINCIPAL DIMENSIONS

LENGTH OVERALL (MILL)	54.459 m
LENGTH M1	53.276 m
BREADTH MOULDED	16.00 m
DEPTH MOULDED	4.50 m
DEFSHA (M/D)	3.00 m
COMPLIANT	12



NOTE - Draw is intended as a guide only. All dimensions are subject to change without notice. The vessel is to be built in accordance with the latest edition of the relevant code of practice. All dimensions are subject to change without notice. All dimensions are subject to change without notice.



SEE ABS LETTER FOR COMMENT

Singapore Letter Ref: 663 Dated: 02-FEB-2010