



GENERAL

Type of ship	Landing Craft
Owner	MACNA
Port of registry	JAZAN PORT
Flag	Saudi Arabia
Classification society	Lloyd's Register of Shipping
Call sign	7Z1282
IMO number	9656072
Official number	SAJ /120
Year built	2012
Min Complement	4 People
Max Complement	12 People
Speed	10 Knots

CONSTRUCTION DETAILS

Length overall	85 m
Moulded breadth	16.5 m
Depth moulded	4.8 m
Designed draft	2.4 m
Loaded draft	3.00 m
DWT @ 2.4m	1000T
DWT @ 3m	1500T
GRT	2045T
NRT	613T

MACHINERY & DECK MACHINERY

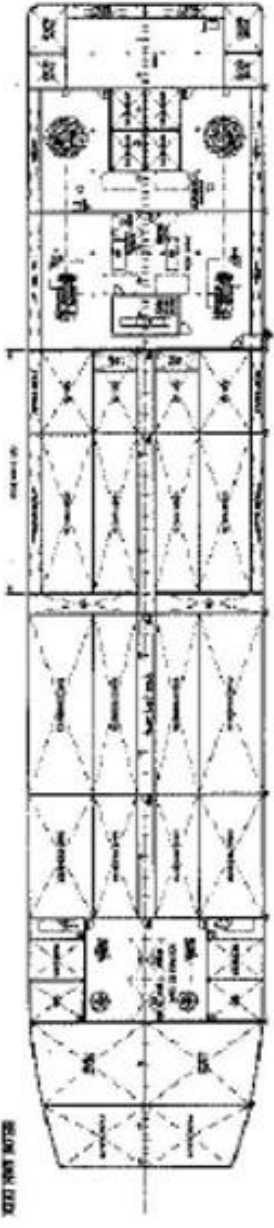
Main engine	2x 1790 KW Cummins Kta 38 M2
Main propulsion system	2XSchottel SRP550kW 6 cylinder, Cummins KTA19 diesel
Bow thruster Schottel pump jets	2x210 KW Cummins QSL9 2x Schottel SPJ57RD
Gensets	2x195KW 6090John Deere
Emergency fenerator	1x 80KW 6bt Cummins
Mooring winches aft TA	Electro hydrolic 2xJiangsu Haitai
Rescue boat	4X12 men inflatable
Ramp Door	12m Length, 300T Capacity

CARGO DETAILS

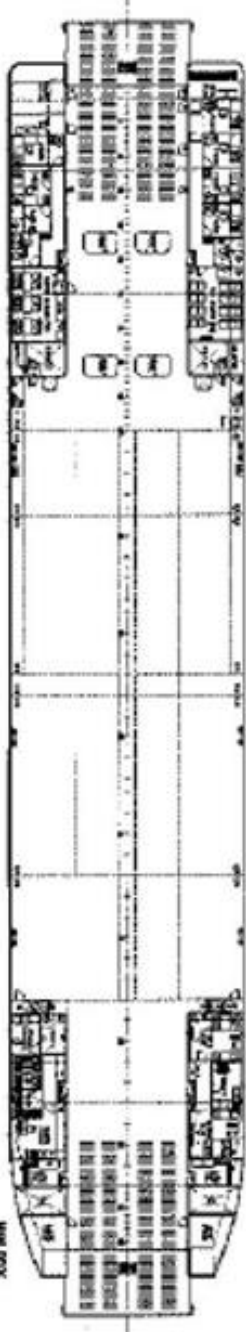
Fresh water	170 m ³
Bunker capacity	250 m ³
Free deck space	900 m ²
Freshwater/saltwater ballast	1003 m ³
Freshwater cargo	1200 m ³
Freshwater cargo discharge rate	100m ³ /H @ 35m
Fuel cargo	484 m ³
Fuel cargo discharge rate	75m ³ /H @ 40m
Deck strength	15T/m ²

RADIO & NAVIGATION EQUIPMENT

Auto pilot	Yokogawa PT500A-P-N2
GPS	Furuno GP 150
AIS	Furuno NX 700A
Fire alarm system	Tyco T1216
Radar	Furuno FAR 2117 D
Telephone system	Huayan CK 1
Radar mediator	4x Schottel
Compass	Yokogawa Saura SR165
Gyro compass	Yokogawa CMZ900S
Echo sounder	Furuno FE 700
Speed & distance log	Furuno DS 80
Communication equipment	GMDSS radio, EPIRB 2x SART 3x VHF 2 way radio



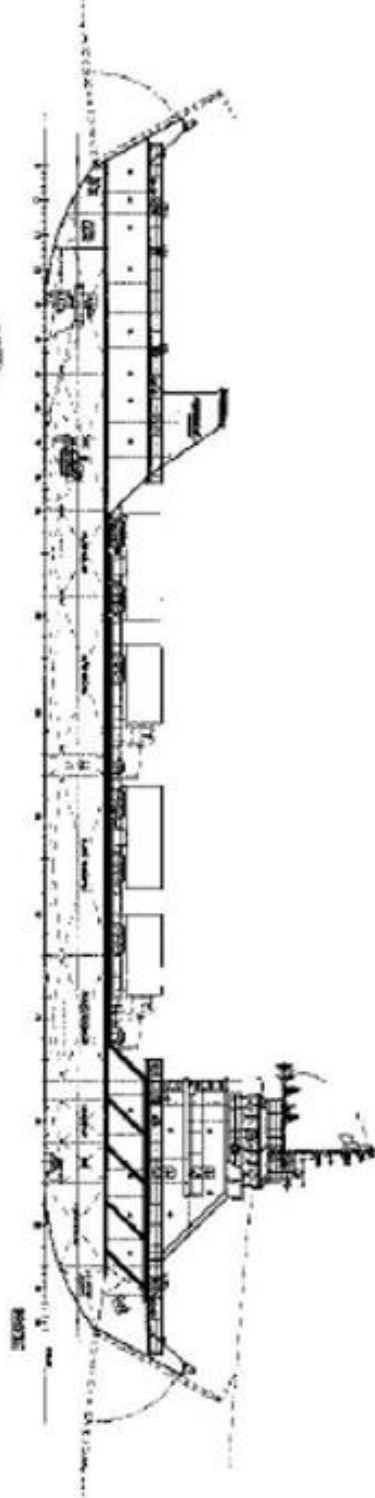
UPTER DECK



LOWER DECK



MAIN DECK



PORT

INSPECTION REPORT

NO.	12-11514
DATE	12/20/13
BY	SALEH AL-SAYED
FOR	SALEH AL-SAYED

INSPECTION REPORT

SALEH AL-SAYED

SALEH AL-SAYED

SALEH AL-SAYED

ACCEPTANCE FOR CONSTRUCTION PERMIT ONLY

TECHNICAL DIMENSIONS

LENGTH (OVERALL AREA)	84.00 M
DEPTH (MAXIMUM)	02.50 M
BREADTH (MAXIMUM)	14.50 M
DEPTH (UNDER DECK)	4.20 M
DEPTH (OVER DECK)	1.40 M
DISPLACEMENT (GROSS)	4000 T
DISPLACEMENT (NET)	12 T

