



GENERAL

Type of ship	LCT LANDING CRAFT
Owner	MACNA
Port of registry	JAZAN
Flag	Saudi Arabia
Classification society	Lloyd's Register of Shipping
Call sign	7Z0178
IMO number	9631773
Official number	SAJ/112
Builder's identification	HULL 342
Year built	2011
Max Complement	52 PERSON
Speed	10 Knots@ 85 % MCR WITH OPERATION

CONSTRUCTION DETAILS

Length overall	79.00 m
Beam (m)	17.4 m
Depth moulded	5.00 m
Loaded Draft (Molded)	3.20 m
GRT	1719 T
NRT	516 T
Dead weight	2000 T
Fresh water	58000 LTR
Bunker capacity	329000 LTR
Bow ramp length	6.358 M
Bow and Stern ramp door loading capacity	7 T (2.4 MIN AXEL SPACING)
Permissible uniform loading	50 T

MACHINERY & DECK MACHINERY

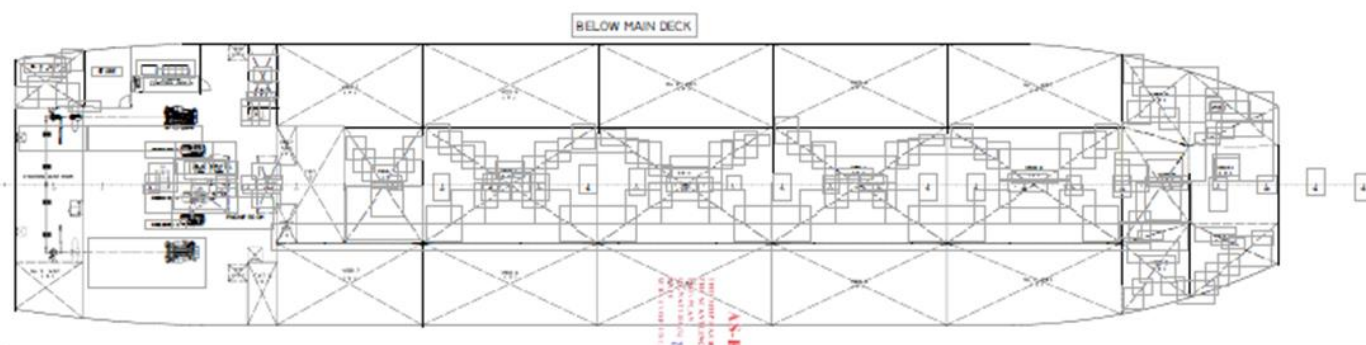
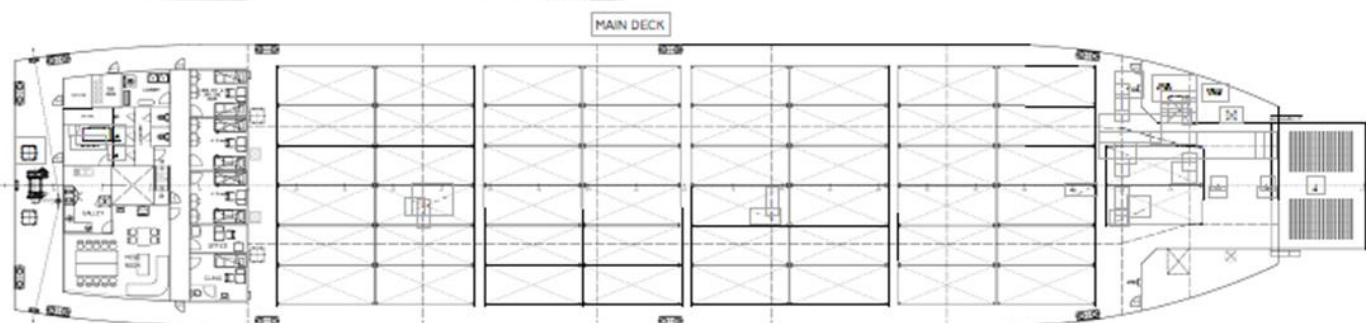
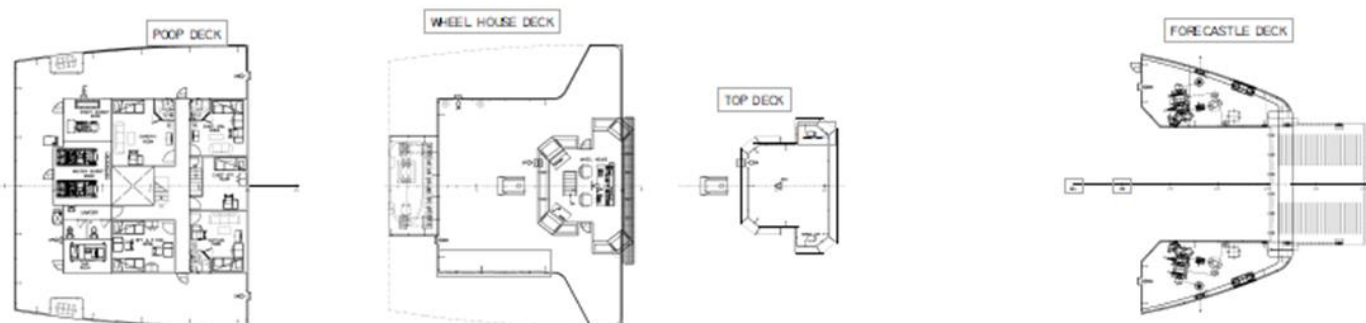
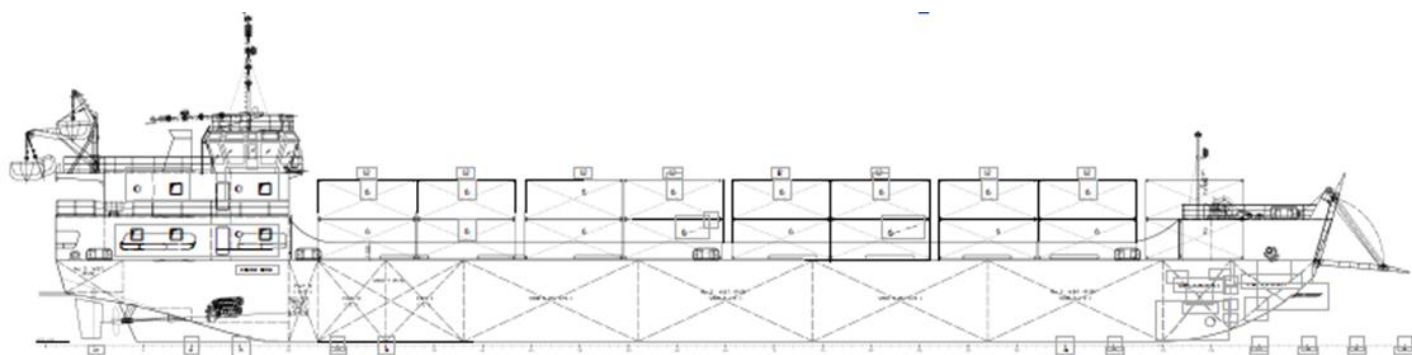
Main propulsion system	2X 1000 (746) BHP (KW) @ 1800 RPM
Gen - Sets	3X 69 KW CAT
Main Propulsion	PT. ASIA FOUNDRY & ENGINEERING
Bow thruster	NIL
Mooring winch	3
Rescue boat	1X Rescue boat 25 person
Life raft	3X 20 PER + 3 x 25 PER
Ramp Door	15 M Length, 50 T Capacity

CARGO DETAILS

Car Deck Capacity :	950 SQM
MAX. Garage hight :	open air

RADIO & NAVIGATION EQUIPMENT

Auto pilot	SPERRY MARINE 0735-08
GPS	2 (Furuno GP-170)
AIS	JOTRON
Fire alarm system	CONSILIUM
Radar	2(Furuno FAR-MU231)
Telephone system	KEXUN
Rudder indicator	4 X KAMEWA JET INDECATOR
Compass	SPERRY MARINE
Gyro compass	SPERRY MARINE
Echo sounder	FURUNO
Speed & distance log	NILL
Communication equipment	2 VHF, 1 MF/HF, 1 EPIRB, 2X SART,



PRINCIPAL PARTICULARS

LENGTH OVER ALL	79.00 M
BREADTH (MOULDED)	17.40 M
DEPTH (MOULDED)	5.00 M
DRAFT (SCANTLING)	3.50 M
DRAFT (DESIGN)	3.20 M
CONTAINER CAPACITY	100 TEUS



PT. DOK DAN PERKAPALAN SERABAYA (PERSEBA)
 R. YANBERG 5000, BARRU, N. 40140
 Telp. (0822) (043) 214.500, 214.501, 214.502, 214.503, 214.504
 SERABAYA, SERABAYA



GENERAL ARRANGEMENT AGENDA BELLA

P E M E S A N Order		No. PERMILIKIAN LAYANAN MAREKANG/01/00000		LEMBAR No.	
PT. ALFA TRANS BAYA		N. 10407		1/1	
DIKORINGI By	DIKORINGI By	DIKORINGI By	TEKNIKAL 1/000	REKALA 1/000	No. LEMBAR 1/000
			10 - 10 - 2012	1. 150	G.0303