



GENERAL

Type of ship	Landing Craft
Owner	MACNA
Port of registry	Jeddah
Flag	Saudi Arabia
Classification society	Lloyd's Register of Shipping
Call sign	HZ1153
IMO number	9656060
Official number	SA/134
Builder's identification	NB124
Year built	2012
Max Complement	12 people
Speed	10 Knots

CONSTRUCTION DETAILS

Length overall	84.67 m
Beam (m)	16.50 m
Deck area	900 sqm
Depth moulded	4.80 m
Loaded Draft (Molded)	3.00 m
GRT	2045 T
NRT	613 T
Dead weight	1815 T
Fresh water	170.00 m ³
Bunker capacity	250.00 m ³
Bow and Stern ramp length	9.85 M
Bow and Stern ramp fingers	2.50M
Bow and Stern ramp door loading capacity	7.5 ton/m ²
Permissible uniform loading	300 ton

MACHINERY & DECK MACHINERY

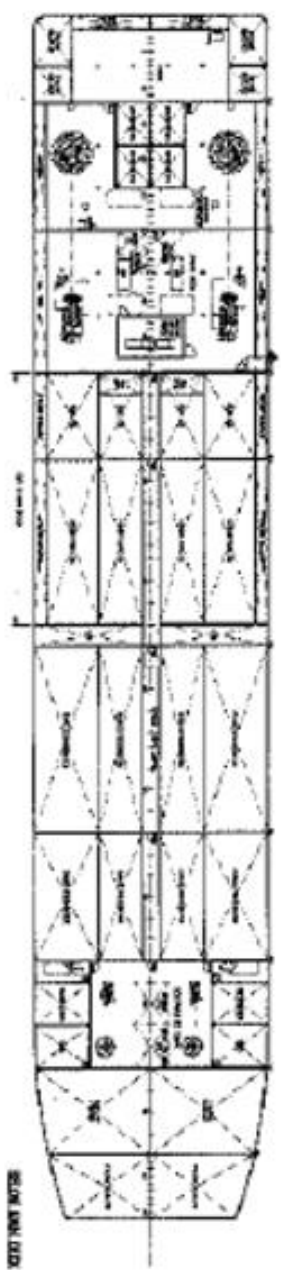
Main propulsion system	2X 1790 kW Cummins KTA38 M2
Gen - Sets	2 X 195 KW 6090 JOHN DEERE
Emergency Generator	1 X 80 KW 6bt Cummins
Main Propulsion	2 X Schottel SRP550
Bow thruster Schottel pump jets	2 X 210 KW Cummins QSL-9, 2 X Schottel SPJ57RD
Mooring winch aft TA	Electro-hydraulic 2 X Jiangsu Haitai
Rescue boat	1 X Rescue boat 6 person
Life raft	4 X 12 men inflatable
Ramp Door	12m Length, 300T Capacity

CARGO DETAILS

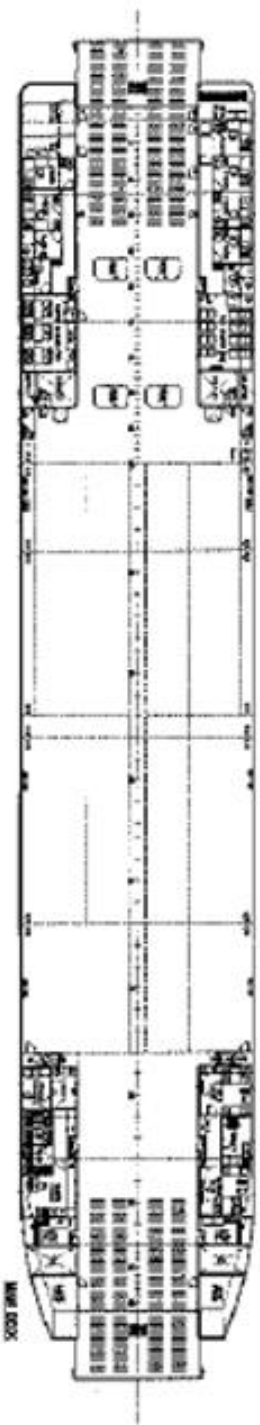
Cargo freshwater	1200.00 m ³
Cargo freshwater discharge rate	100.00 m ³ /H@35M
Cargo fuel oil	484.00 m ³
Cargo fuel discharge rate	75.00 m ³ /H@25M
Deck strength	15 T/m ²

RADIO & NAVIGATION EQUIPMENT

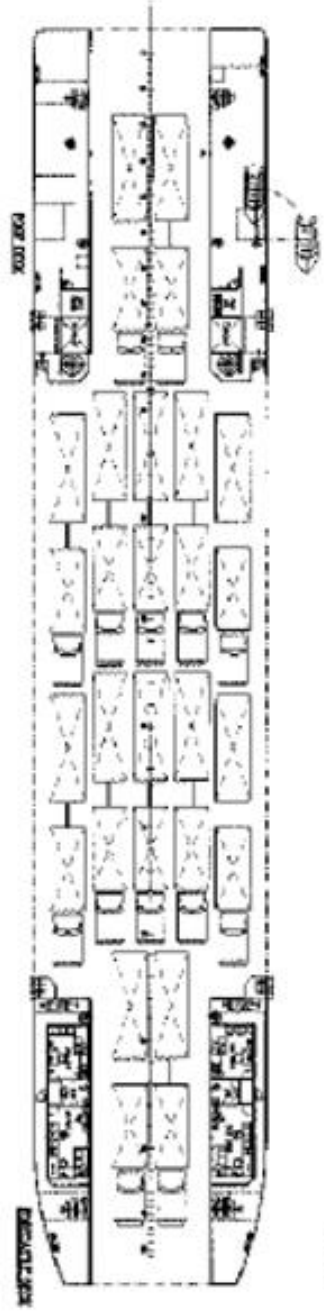
Auto pilot	Yokogawa PT500A-P-N2
GPS	Furuno GP-150
AIS	Furuno NX-700A
Fire alarm system	Tyco T216
Radar	Furuno FAR-2117-D
Telephone system	Hauyan CK-1
Rudder indicator	4 X Schottel
Compass	Yokogawa Saura SR 165
Gyro compass	Yokogawa CMZ900S
Echo sounder	Furuno FE-700
Speed & distance log	Furuno DS-80
Communication equipment	GMDSS radio, EPIRB, 2X SART, 3 X VHF 2-way radio



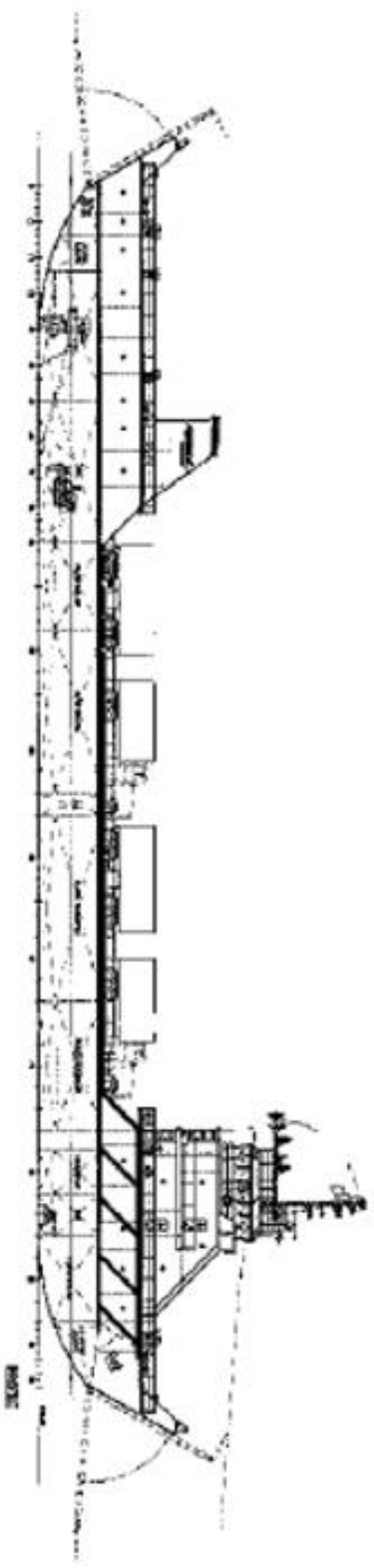
SECTION UPPER DECK



LOWER DECK



MAIN DECK



SECTION

GENERAL APPROXIMATE	
SHIP NAME	AL-SAYED
SHIP TYPE	4800 TONNAGE
SHIP NO.	1111-12
SHIP YEAR	2011
SHIP LENGTH	48.00 M
SHIP BREADTH	6.25 M
SHIP DRAUGHT	1.50 M
SHIP WEIGHT	450 T
SHIP HULL NO.	1111-12
SHIP HULL YEAR	2011

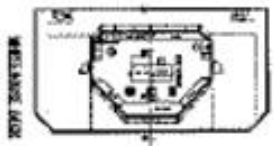
APPROXIMATION LAYERS IS FOR CUSTOMER REFERENCE ONLY.

Handwritten signatures and initials

PRINCIPAL DIMENSIONS	
LENGTH OVERALL (M)	48.00 M
BEAM (M)	6.25 M
DRAUGHT (M)	1.50 M
NET TONNAGE (GROSS)	450 T
NET TONNAGE (NET)	450 T
REGISTRY (COUNTRY)	LIBERIA



ENGINE ROOM



BRIDGE